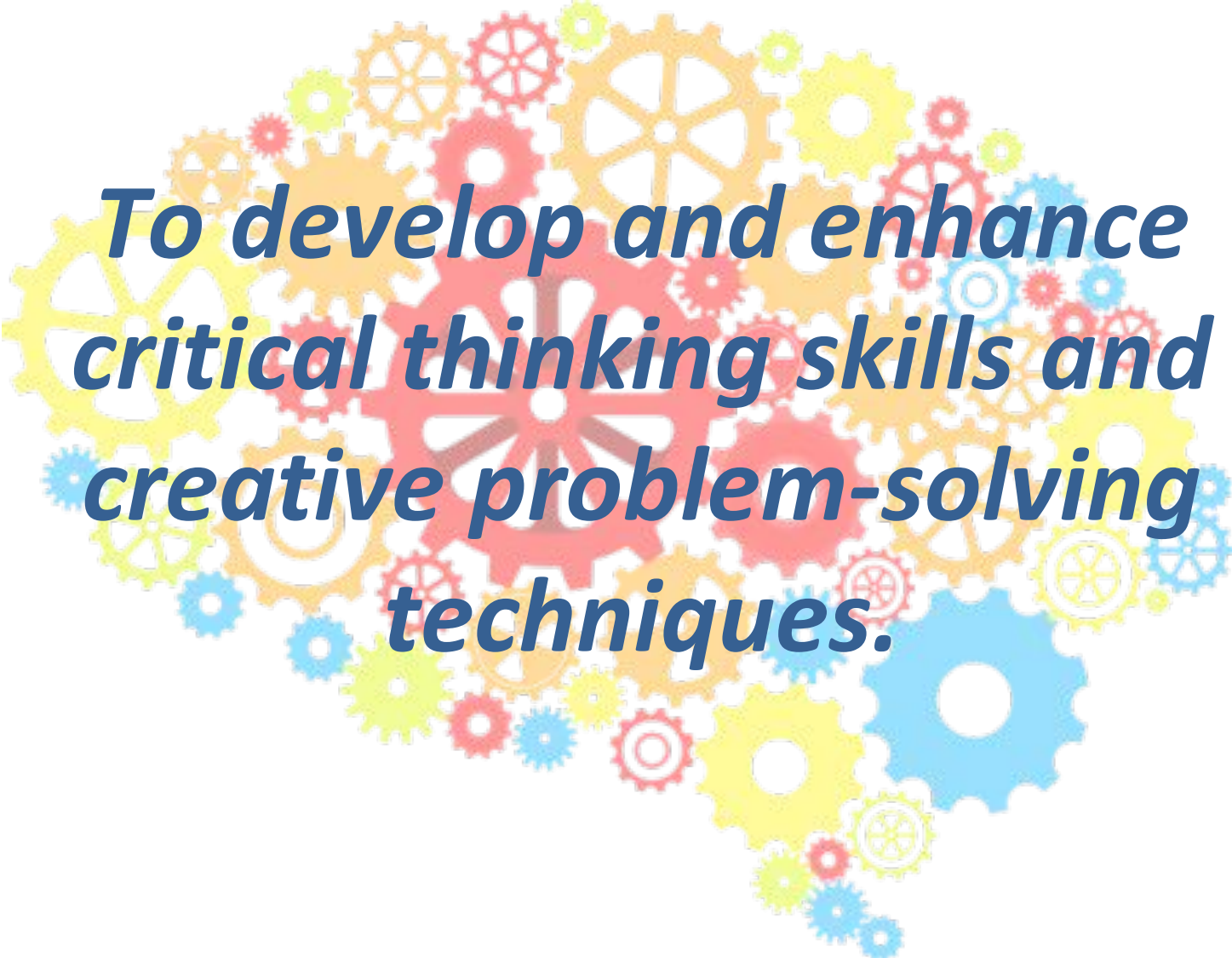




# Connecticut Invention Convention

## Milford Program Overview

# Why We Invent

A graphic of a human brain silhouette filled with numerous interlocking gears of various sizes and colors, including yellow, orange, red, and blue. The gears are arranged to form the shape of the brain, with larger gears in the center and smaller ones towards the edges.

***To develop and enhance  
critical thinking skills and  
creative problem-solving  
techniques.***

# About the CT Invention Convention

- An award-winning program that encourages K-8 students to start thinking about a career path in engineering, technology and design.
- Largest invention convention in the US
- More than 280,000 kids participated in the program since 1987
- Over 25,000 kids have attended the CIC Annual Invention Convention since 1987
- Over 200 Connecticut schools have participated since 1987
- 32 CIC Inventors appeared on TV shows
- Several CIC Inventions have been patented

[www.CTInventionConvention.org](http://www.CTInventionConvention.org)





# How It Works





# Invention Conventions





# Parent Responsibilities

Treat the Invention Convention as you would a sport in which your child is engaged:

- Bring your child to each workshop
- Help them collect supplies\* and use tools
- Encourage them to work on their project and remember deadlines
- **But the work, solution and notes all need to be from the young inventor**

\* Project supply cost limited to \$50

# Encouraging the Young Inventor

## THE DESIGN PROCESS

Used by both inventors and engineers, the design process helps people think creatively about a problem and produce a successful result. The design process is a great way to tackle almost any task.



# Encouraging the Young Inventor

Evolutionary can be revolutionary!

Make a good invention better.

**S**ubstitute.

**C**ombine.

**A**dapt.

**M**odify.

**P**ut to another use.

**E**liminate.

**R**everse.





# Project Components



**INVENTION**



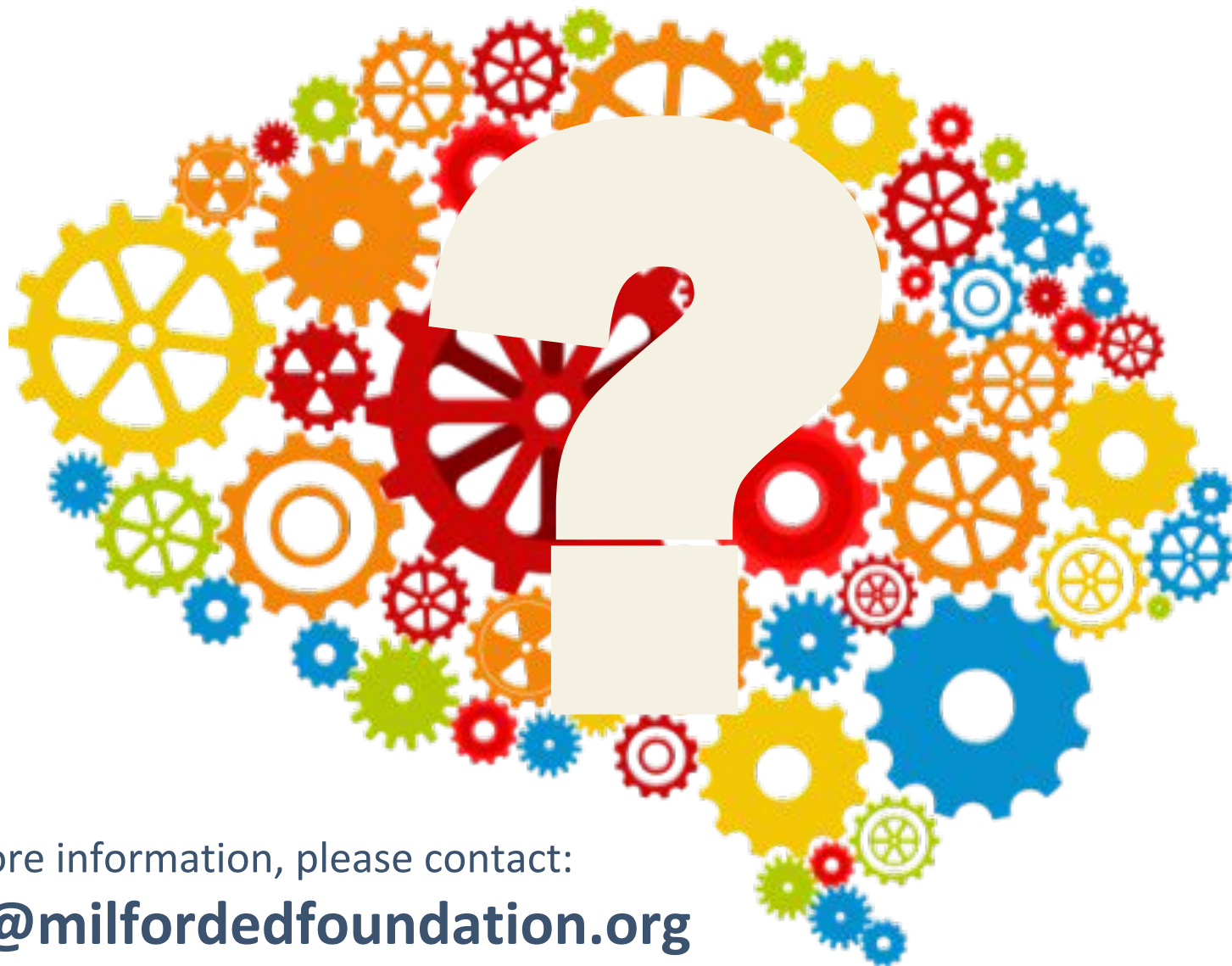
**PRESENTATION**



**DISPLAY BOARD**



**INVENTION LOG**



For more information, please contact:

**[info@milfordedfoundation.org](mailto:info@milfordedfoundation.org)**